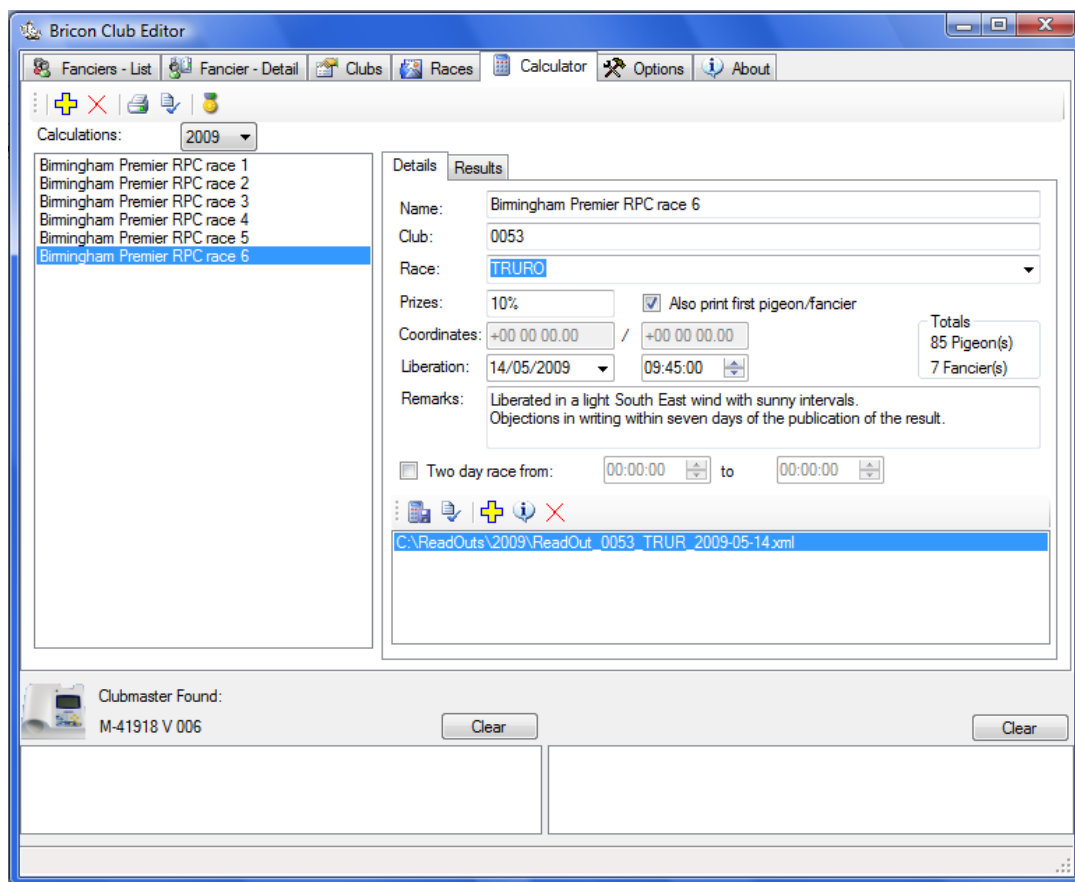


BRICON

Result Calculator



International User Guide

BCE 1.0.3.39 or higher

BRICON nv : Europark Oost 15C, 9100 Sint-Niklaas, Belgium

Tel: +32 3 777 3974 Fax: +32 3 778 0735

www.bricon.be email: bricon@bricon.be

Calculator function in the Bricon Club Editor

Purpose

The results calculator in the Bricon Club Editor (BCE) makes it possible to read race data automatically from Bricon clocks in order to calculate race results. It is also possible to enter the data from other clocks manually.

Attention - Data must be entered correctly to ensure a true calculation of the result.

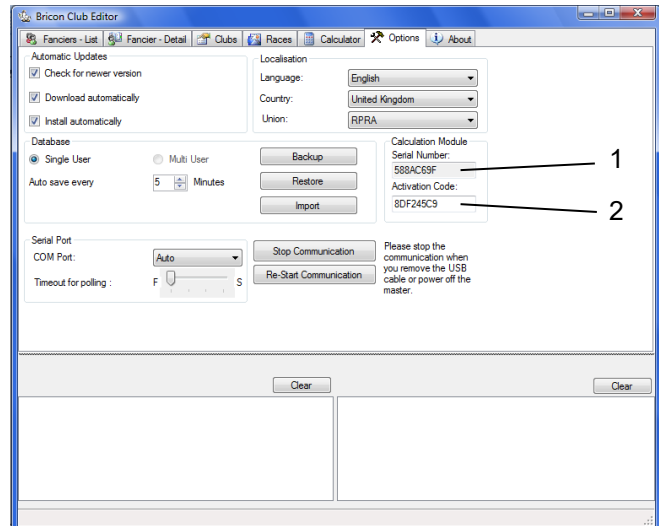
Activation

To use the calculator your application requires an activation code. Go to the options tab within BCE and make a note of the serial number (1) indicated within the calculation module.

The serial number is unique to each computer, so it should be generated on the computer that is intended to be used for calculating the race results.

To request the activation code email the serial number to bricon.ets@live.com stating your club name and indicating that you require the activation code.

To activate the calculation module enter the activation code (2). After entering the activation code, the Bricon Club Editor must be restarted. You will then see a new tab appear entitled "Calculator" within the BCE.



Requirements

A Computer with the Bricon Club Editor (BCE) [version 2013.3.27.2 or higher], the Bricon Club-Master (BCM) and its power supply. Connect the BCM to the BCE using the USB cable supplied. Turn on the BCE then power on the BCM. Communication will be made between the BCM and BCE. Click on the Calculator tab in the BCE.

NB : The read out print of each clock must be taken prior to commencing using the Bricon result calculator. Do not delete the race information from the clock before carrying out the results calculation process.

The Icons

Add calculation

Delete selected calculation

Print selected calculation

Print settings

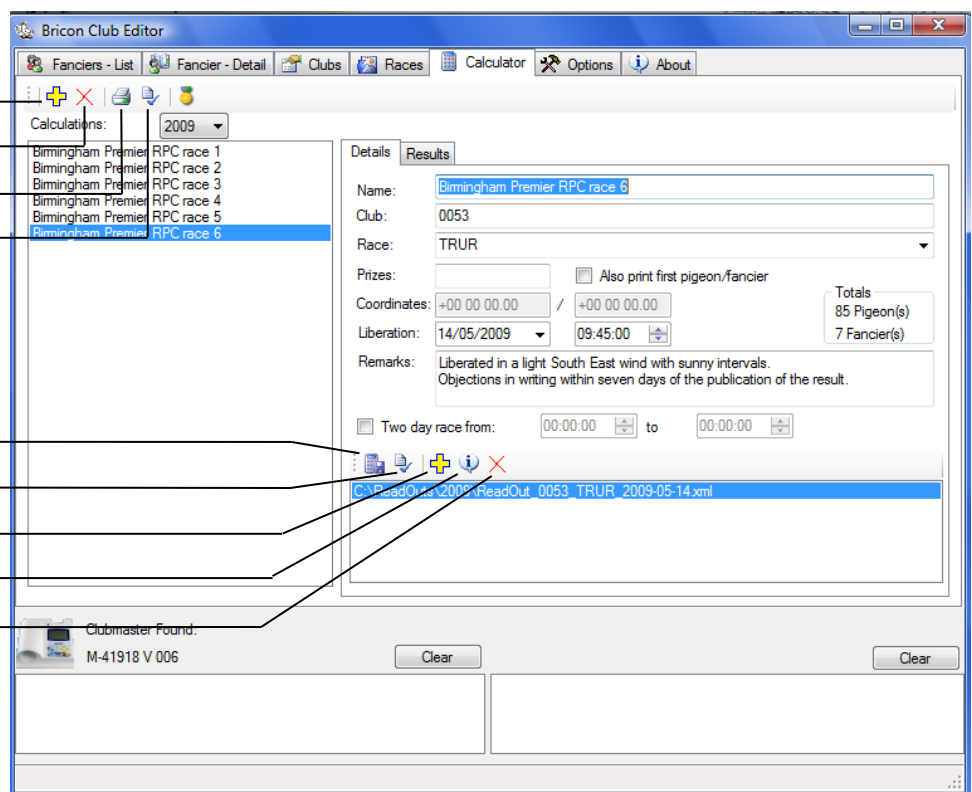
Read out ETS

Manual input

Add read out

View xml file

Remove read out



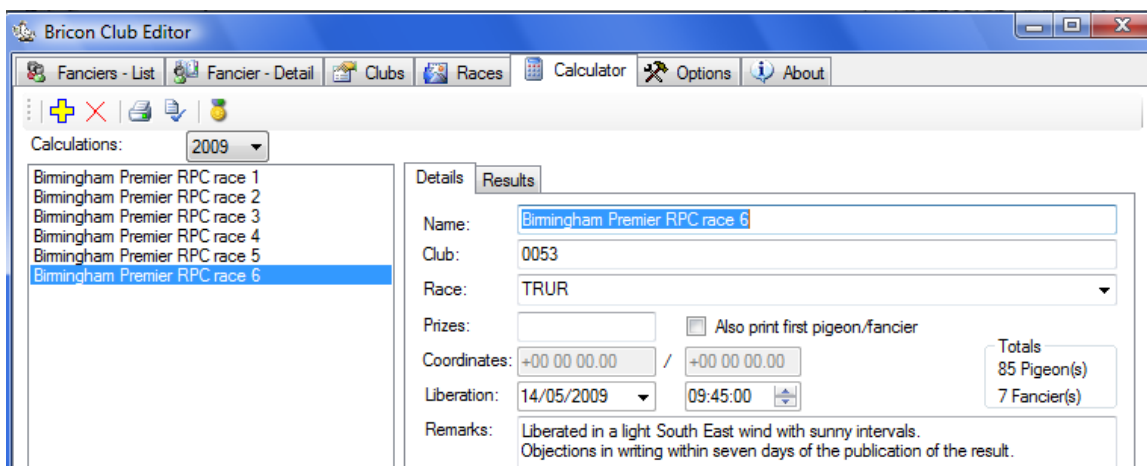
Add Calculation



To start click on the 'Add Calculation' icon, and then within the details tab fill in the following fields.

- Name. The name of the club.
- Club. The club ID (*to match the Club ID on the Bricon Club-Master*).
- Race. Select the race point from the list.
- Coordinates. *Not applicable in the UK.*
- Prizes. Here you can input how many pigeons you wish to be shown on the result. e.g. 10% (= 10% of the basketed pigeons) or 10 without % (= the first 10). You also have the option to print the first pigeon recorded by each fancier.
- Liberation. Enter the date and time of the race liberation.
- Remarks. Optional remarks (to appear on the print out)

NB : The total number of fanciers and pigeons in the race will be read automatically from the clocks.



Read out ETS for calculation

Click on the 'Read Race Data' icon.

Fill in the club ID, the race ID (the first four letters of the racepoint name) and the date of the race.

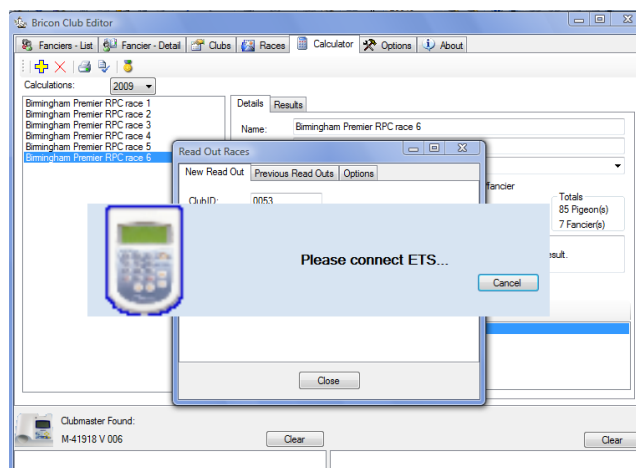
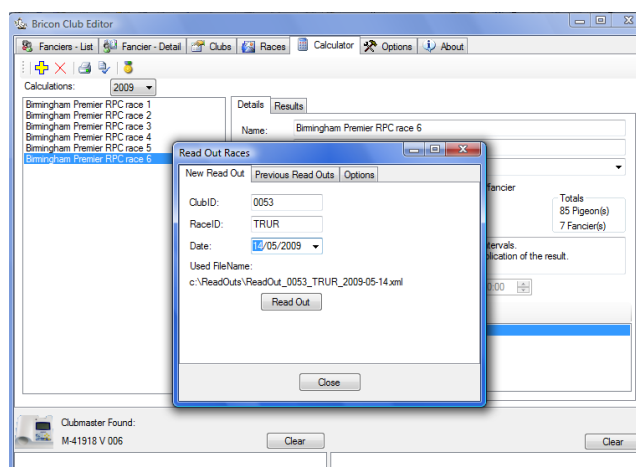
A 'Used FileName' is generated from these inputs.

NB: In settings it is possible to select the destination directory for the read out file.

Click on 'Read out' and when requested connect the Bricon ETS clock to the Bricon Club-Master.

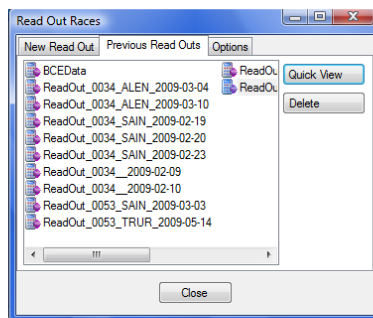
The race data is automatically read from the Bricon ETS clock and is transferred to the computer.

If the fancier's flying distance has previously been added into the distance database, then the distance

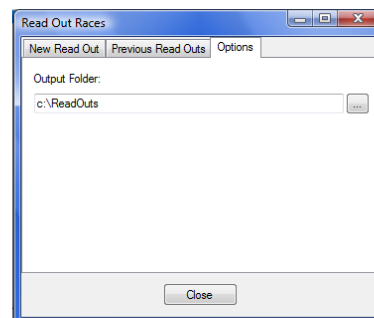


In 'Previous Read Outs' you can view each of the previous read outs taken (with the quick view).

It is also possible to delete a file.



In 'Options' you can select the Destination on your computer for the read out file.



Add Read Out



Clicking on the 'Add Read Out' open the 'Select a read out to add' list.

From the list you can select which read out files you require to be included in the calculation.

More than one xml file may be selected.

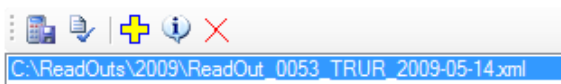
Manual xml files may also be added.



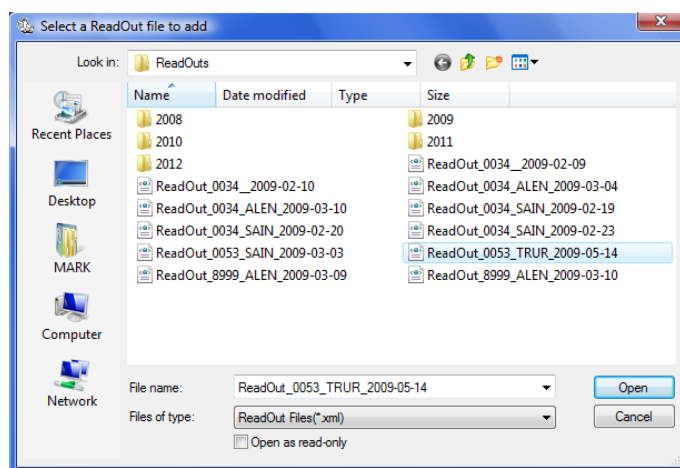
NB: The race data within the selected file may be viewed with the Quick View icon.



It is possible to remove a selected file from the result calculation with the delete icon.



icon will



Manual input



The race data of a competitor using a non-Bricon clock can also be included in the race calculation by a manual input of the information.

Select an existing read out file or input the Club ID, Race ID and the date to create a new xml file.

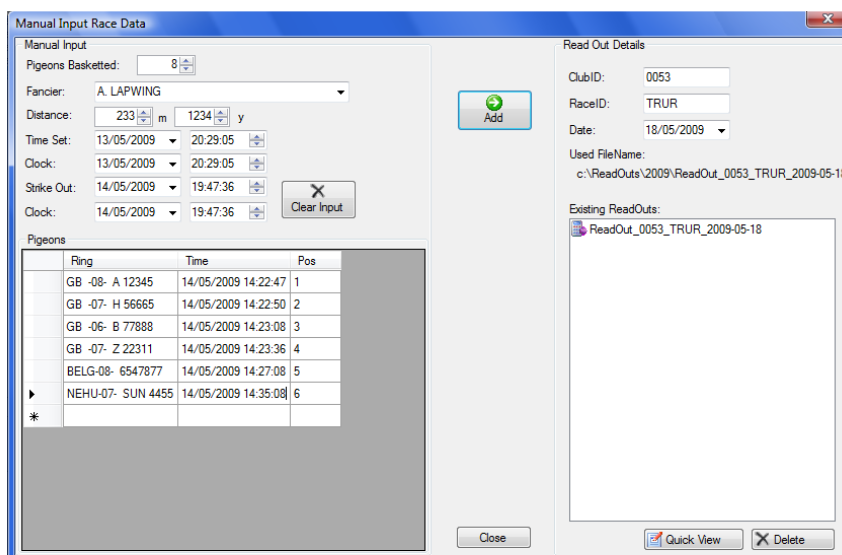
Input the number of pigeons basketed by the fancier, select the name of the fancier and enter the flying distance in miles and yards.

Enter the data for the time set and strike out. For each bird recorded enter the ring number and colour plus the time/date of the clocking.

For the quick input of data

Use tab to switch between fields. Use the arrows (left and right) to switch within the fields (hours to minutes).

Use the arrows (up and down) to change the value or type in the new value (for date and time). Use the enter button to add the input.



Click on 'Add' to add the race calculations to the selected xml file.



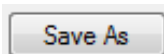
View XML file



The information within the selected xml file can be viewed by clicking on the quick view icon.

A 'View Data' box appears revealing all of the data that is held within the xml file.

If any changes are necessary the amendments can be saved by clicking on the 'Save As' icon.



Fancier							
ID	Loft Number	Name	Address	ZipCode	City	Coc	
1	WM10123	MR & MRS KINGFISHER	22 Lakeside Road, Edgbaston	B43 5HD	Birmingham.	+52	
2	WM11456	S. GOLDFINCH	3 Teale Street,	B43 5HD	Sutton Coldfield	+52	
3	WM12999	T. SPARROW & SON	5 Garden Drive, Great Barr	B43 5HD	Birmingham.	+52	
4	WM08745	P. GREENSHANK	77 Watery Lane, Sheldon	B43 5HD	Birmingham.	+52	
5	WM04994	B. T. GODWIT	412 Black Street, Smethwick	B43 5HD	Warley.	+52	
6	WM04478	A. LAPWING	88 Green Road, Palfrey	B43 5HD	Walsall.	+52	
7	WM07755	G. S. WOODPECKER	Treehole House, Oak Road,	BS40 8RW	Wednesbury	+52	

Pigeons										
ID	FancierID	EBand	FedBand	ClubID	RaceID	AA	YL	YB	H	
1	1	C59232CB	GB -07- T 77007 BLUE	0053	TRUR	1	0	0	0	
2	1	C5932F77	BELG-09- 3023223 DARK	0053	TRUR	4	0	1	0	
3	1	C593267E	NL -08- 1455667 RED	0053	TRUR	3	1	0	0	

Times						
ID	FancierID	ClubID	RaceID	BasketingMasterTime	BasketingInternalTime	BasketingDiff
1	1	0053	TRUR	13/05/2009 23:38:01	13/05/2009 23:38:01	+000
2	2	0053	TRUR	13/05/2009 23:39:01	13/05/2009 23:39:01	+000
3	3	0053	TRUR	13/05/2009 23:40:48	13/05/2009 23:40:48	+000
4	4	0053	TRUR	13/05/2009 23:41:51	13/05/2009 23:41:51	+000

Calculation of result



After the required read out 'Add ReadOut' icon then the 'Results' tab can be clicked to view the calculated result.

Birmingham Premier RPC race 1							
Birmingham Premier RPC race 2							
Birmingham Premier RPC race 3							
Birmingham Premier RPC race 4							
Birmingham Premier RPC race 5							
Birmingham Premier RPC race 6							
Details		Results					
Number	FancierName	RingNumber	ClockingTime	CorrectedTime	FlightTime		
1	MR & MRS KINGFISHER	GB -07- T 77007 BLUE	14/05/2009 14:19:03	14/05/2009 14:19:03	04:34:03	2'	
2	MR & MRS KINGFISHER	BELG-09- 3023223 DARK	14/05/2009 14:19:11	14/05/2009 14:19:11	04:34:11	2'	
3	B. T. GODWIT	GB -04- R 41309 BLPD	14/05/2009 14:21:21	14/05/2009 14:21:20	04:36:20	2'	
4	S. GOLDFINCH	WHU -05- P 99177 DKWF	14/05/2009 14:18:58	14/05/2009 14:18:58	04:33:58	2'	
5	B. T. GODWIT	GB -04- A 01110HGRIZ	14/05/2009 14:21:50	14/05/2009 14:21:49	04:36:49	2'	
6	S. GOLDFINCH	GB -08- T 86655 CHPD	14/05/2009 14:19:46	14/05/2009 14:19:46	04:34:46	2'	
7	A. LAPWING	GB -08- A 99009 BLUE	14/05/2009 14:23:19	14/05/2009 14:23:19	04:38:19	2'	
8	A. LAPWING	GB -07- B 12456 CHEQ	14/05/2009 14:23:22	14/05/2009 14:23:22	04:38:22	2'	
9	S. GOLDFINCH	NL -07- 1277755 DARK	14/05/2009 14:21:27	14/05/2009 14:21:27	04:36:27	2'	
10	S. GOLDFINCH	GB -09- F 64000 CHPD	14/05/2009 14:21:34	14/05/2009 14:21:34	04:36:34	2'	
11	A. LAPWING	GB -08- C 44555 RED	14/05/2009 14:25:08	14/05/2009 14:25:08	04:40:08	2'	
12	T. SPARROW & SON	GB -06- K 47711HBLPD	14/05/2009 14:27:53	14/05/2009 14:27:52	04:42:52	2'	
13	MR & MRS KINGFISHER	NL -08- 1455667 RED	14/05/2009 14:22:07	14/05/2009 14:22:07	04:37:07	2'	
14	T. SPARROW & SON	GB -06- E 27774 CHEQ	14/05/2009 14:27:57	14/05/2009 14:27:56	04:42:56	2'	
15	MR & MRS KINGFISHER	NEHU-05- WAN 2355 CHWF	14/05/2009 14:22:29	14/05/2009 14:22:29	04:37:29	2'	
16	P. GREENSHANK	WHU -08- C 03345 SI AT	14/05/2009 14:29:44	14/05/2009 14:29:43	04:44:43	2'	

Print settings



By clicking on the "Print setting" icon you can select optional columns to appear on the result print-out.

NB: It is recommended within the UK, that the two columns indicated opposite are selected.

To Print the Result

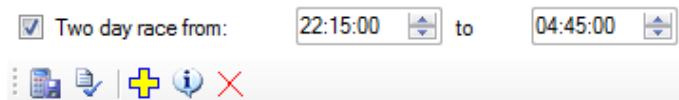


Select a calculation and click on the print icon. Follow the instructions to obtain the required print out.

Calculation Print Settings	
<input type="checkbox"/>	Print ClubID Column
<input checked="" type="checkbox"/>	Print Flying Time instead of Clock Time
<input checked="" type="checkbox"/>	Print Position Column
<input type="checkbox"/>	Print Percentage Column
<input type="checkbox"/>	Print FCI-AB Column
<input type="checkbox"/>	Print FCI-CD Column
<input type="checkbox"/>	Print FCI-E Column
<input type="checkbox"/>	Print TeamNbr Column
<input type="checkbox"/>	Print FCI Custom Column
Percentage: 0.00	
<input type="button" value="OK"/> <input type="button" value="Cancel"/>	

Two day races

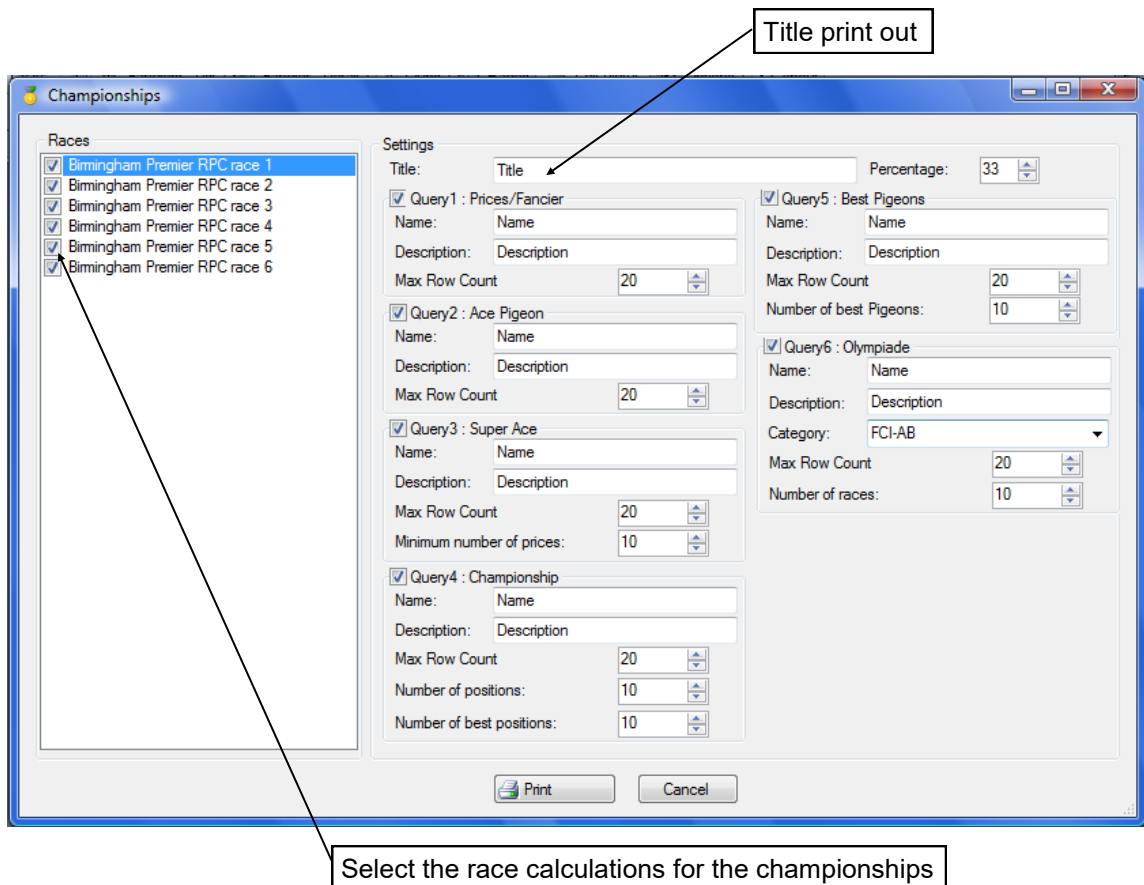
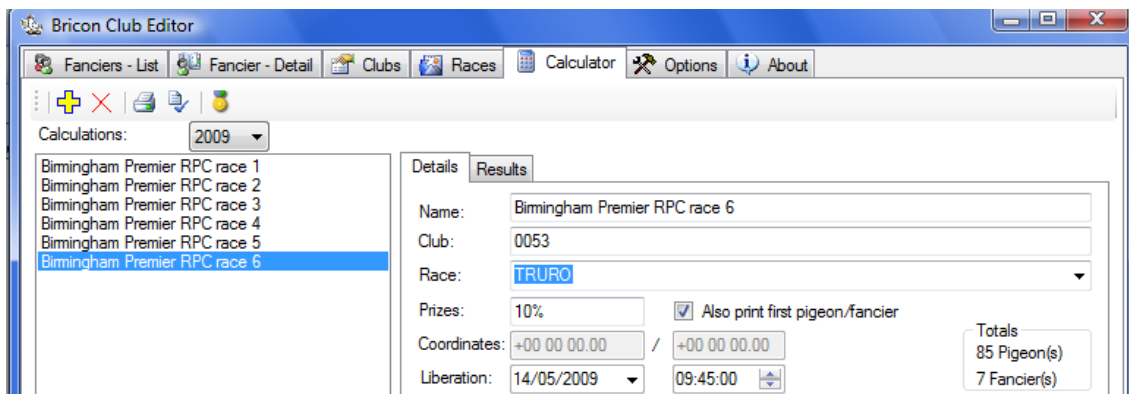
When a race extends into a second day, the 'Two day race' box should be ticked and the hours of darkness should be added prior to the result calculation.



Championships



A variety of optional special championships can be calculated by clicking on the 'Championships' icon after having made a result calculation.



Title print out

Select the race calculations for the championships

Select (with a tick in the box) the queries that you want to see on the print out

- Query 1 : Prizes / fancier
- Query 2 : Ace Pigeon
- Query 3 : Super ace
- Query 4 : Championship
- Query 5 : Best pigeons
- Query 6 : Olympiade

Query 1 : Prizes / fancier

Query1 : Prizes/Fancier
Name:
Description:
Max Row Count

This Query shows the total basketed pigeons/fancier and the prize counts/fancier

In max row count it is possible to select how many fanciers you print. (the fastest fancier is always listed first).

Query 2 : Ace Pigeon

Query2 : Ace Pigeon
Name:
Description:
Max Row Count

Query 3 : Super Ace

Query 4 : Championship

Query3 : Super Ace
Name:
Description:
Max Row Count
Minimum number of prizes:

Query4 : Championship
Name:
Description:
Max Row Count
Number of positions:
Number of best positions:

Query 5 : Best Pigeons

Query5 : Best Pigeons
Name:
Description:
Max Row Count
Number of best Pigeons:

Query 6 : Olympiade

Query6 : Olympiade
Name:
Description:
Category:
Max Row Count
Number of races:

NEW FEATURE

The Bricon Results Calculator now has a race distance database

Distances can now be added into the database prior to racing so that when the race data is transferred from the clock to the calculator the race distance will automatically be used in the result calculation without the need to manually input it

The race distance database can be accessed in the Bricon Club Editor from within 'Fancier - Detail'
Distances should be inputted prior to racing

To add the race distances for a fancier to the database

Firstly you must activate the distance database

Click on the options tab and within this page place a tick within the box labelled 'Use Distance DB' (found just below where you entered the activation code)

Click on 'Fanciers - List' and then find and highlight the required fancier

Click onto 'Fanciers - Details'

Click on the new icon 'Race Distances'
found along the tool bar near the top of the screen

A list of racepoints will appear on screen

Input the race distance for the fancier for each racepoint that is required

Repeat for each fancier

The distance will then be used automatically in any result calculation

Declaration of conformity

Directive 1999//5/EC (R&TTE)

BRICON nv
Europark Oost 15 C
9100 Sint-Niklaas
Belgium



Hokantenne 1V-XXxxx
Hokantenne 2V-XXxxx
Hokantenne 4V-XXxxx
Hokantenne 6V-XXxxx

We declare the product mentioned below on which this declaration is related to that on own justification, in agreement is with the essential requirements and with other relevant provisions of the R&TTE directive (1999/5/EC).

Article : Loft Antenna
BRICON 1V (14cm), 2V (28cm), 4V (50cm), 6V (70cm).

Type : Reader for transponders (125kHz)

In agreement are with Â§3 of R&TTE- the directive.

Health and security Â§3 (1) a:

Applied standards:

EN 60950:1992+A1+A2:1993+A3:1997+A11:1997

EMC §3(1)b:

Applied standards:

EN 301 489-3/07.200

Radio frequency spectrum Â§3 (2)

Applied standards:

EN 300 330-2 V1.1/7.2000

Technical file is available at the offices of the manufacturer.

BRICON nv, Europark Oost 15C, Sint-Niklaas, Belgium.

Place and date of issue: Sint-Niklaas, 13-12-2005.

Manufacturer / Authorised representative

Ivan Baetens
Director.

Francis Nolmans
Director.